



HEDWIG



CORA



DUDLEY



WINEFRED



BANCROFT



ABIGAIL

WINEFRED

LIKES:

- Cats
- Tests
- Root canals
- George Clooney as Batman

DISLIKES:

- Ice Cream
- Hygiene
- Kindness
- A clean bill of health

UNIQUE ABILITY:

May steal ONE card from the Discard Pile, only once, at any time during the game.

DUDLEY

LIKES:

- Mondays
- Taxes
- The ending of LOST
- Ant bites

DISLIKES:

- Children's laughter
- Flowers
- Hyperbole
- Segway scooters

UNIQUE ABILITY:

May re-draw entire hand, only once, at any time during the game.

CORA

LIKES:

- Endless space
- Dead leaves
- Pizza with pineapple
- Scrapbooking

DISLIKES:

- The smell of life
- Lawn chairs
- All holidays
- Friendship

UNIQUE ABILITY:

Immune to ONE Increase Tolerance card. If one is drawn, it may be discarded and a new card may be drawn.

HEDWIG

LIKES:

- Dark strolls through haunted woods
- Asparagus shakes
- The color gamboge
- Books

DISLIKES:

- Sunshine
- Compound words
- Subtitles
- Extroverts

UNIQUE ABILITY:

May swap out ONE Test Subject for one from the deck, only once, before any Pain cards have been played on that Test Subject.

ABIGAIL

LIKES:

- The government
- Swamps
- Spiders
- Radioactivity

DISLIKES:

- Naps
- Hugs
- Betty White
- Paprika

UNIQUE ABILITY:

May steal ONE card from any Classmate, only once, at any time during the game. You may look at the hand of whom you are stealing from.

BANCROFT

LIKES:

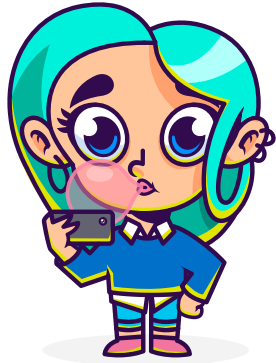
- Chores
- Splinters
- Hallmark movies
- The smell of burning hair

DISLIKES:

- Puppies
- A gentle breeze
- Fresh fruit
- Words of encouragement

UNIQUE ABILITY:

May use ANY Pain card on any category, only once, at any time during the game.



ADDISON

The Social Influencers

PAIRS WITH: Bentley +1
IMMUNE: Mental Gymnastics



BENTLEY

The Social Influencers

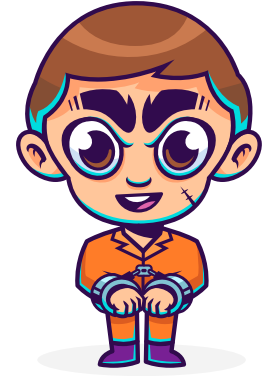
PAIRS WITH: Addison +1
IMMUNE: Why Am I Awkward?



OSCAR

The Escaped Convicts

PAIRS WITH: Jasper +1
IMMUNE: Pain In My...



JASPER

The Escaped Convicts

PAIRS WITH: Oscar +1
IMMUNE: No You Idiot!



BEATRICE

The Bingo Buddies

PAIRS WITH: Maude +1
IMMUNE: Are We Alone?



MAUDE

The Bingo Buddies

PAIRS WITH: Beatrice +1
IMMUNE: Triggered!



NORMAN

The Identical Twins

PAIRS WITH: Sherman +1
IMMUNE: Origami Mishap



SHERMAN

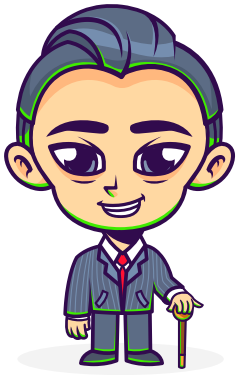
The Identical Twins

PAIRS WITH: Norman +1
IMMUNE: Spoiler Alert



TEST SUBJECTS BACK





BROMLEY
The Billionaires

PAIRS WITH: Nyles +1
IMMUNE: Pls Halp!

3 2 1



NYLES
The Billionaires

PAIRS WITH: Bromley +1
IMMUNE: Who Am I?

3 2 1



DEWEY
The Nerds

PAIRS WITH: Winthrop +1
IMMUNE: We Are Not Alone

3 2 1



WINTHROP
The Nerds

PAIRS WITH: Dewey +1
IMMUNE: Bad Dreams

3 2 1



COURTLAND
The Former High School Jocks

PAIRS WITH: Leopold +1
IMMUNE: Middle Of The Night Potty

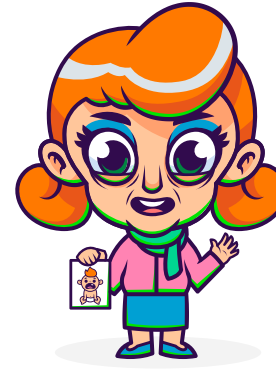
3 2 1



LEOPOLD
The Former High School Jocks

PAIRS WITH: Courtland +1
IMMUNE: Ghosted

3 2 1



EDITH
The Mother & Son

PAIRS WITH: Cromwell +1
IMMUNE: Unexplained

3 2 1



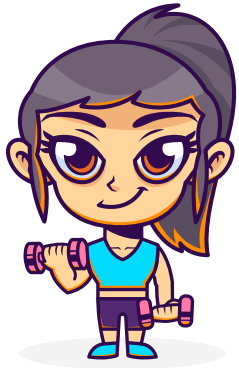
CROMWELL
The Mother & Son

PAIRS WITH: Edith +1
IMMUNE: Instructions Unclear

3 2 1

TEST SUBJECTS BACK



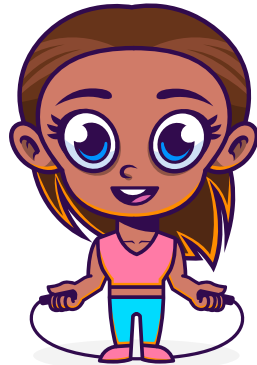


MISSY

The Health Nuts

PAIRS WITH: Jocelyn +1
IMMUNE: Social Anxiety

💧 3 🍑 2 🧠 1



JOCELYN

The Health Nuts

PAIRS WITH: Missy +1
IMMUNE: Is This Real Life?

🪐 3 🍑 2 💧 1



VICTORIA

The Genius Scholars

PAIRS WITH: Evelyn +1
IMMUNE: Headache, Party Of One

🧠 3 🍑 2 🪐 1

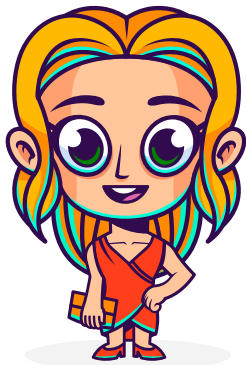


EVELYN

The Genius Scholars

PAIRS WITH: Victoria +1
IMMUNE: Emotional Rollercoaster

💧 3 🧠 2 🧟 1



ADELE

The C-List Celebrities

PAIRS WITH: Sebastian +1
IMMUNE: Hold Mah Beer!

🍑 3 🧠 2 💧 1



SEBASTIAN

The C-List Celebrities

PAIRS WITH: Adele +1
IMMUNE: Anxious Much?

🪐 3 🧟 2 🧠 1



ALBERT

The Hopeless Lovers

PAIRS WITH: Josephine +1
IMMUNE: Why Am I Awkward?

🪐 3 💧 2 🍑 1



JOSEPHINE

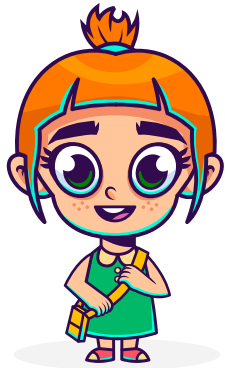
The Hopeless Lovers

PAIRS WITH: Albert +1
IMMUNE: What's Cookin'?

💧 3 🧠 2 🧟 1

TEST SUBJECTS BACK





HOPE

The Innocent Youths

PAIRS WITH: Igby +1

IMMUNE: First World Probs

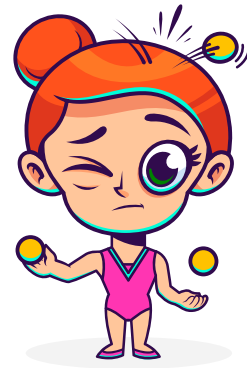


IGBY

The Innocent Youths

PAIRS WITH: Hope +1

IMMUNE: Superunnatural

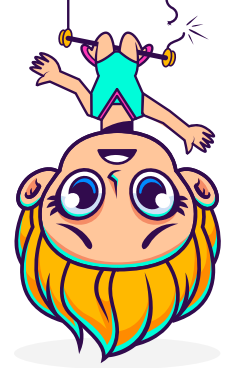


AIDA

The Failed Acrobats

PAIRS WITH: Flora +1

IMMUNE: I'm Not Crying



FLORA

The Failed Acrobats

PAIRS WITH: Aida +1

IMMUNE: Let's Get Physical

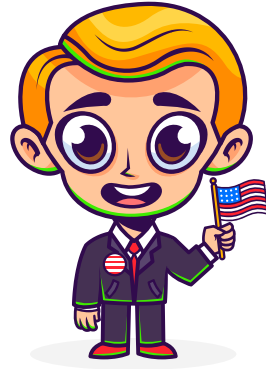


WHEATON

The Politically Divided

PAIRS WITH: Aldredge +1

IMMUNE: Puppies & Kittens



ALDREDGE

The Politically Divided

PAIRS WITH: Wheaton +1

IMMUNE: Hold Mah Beer!



TEST SUBJECTS BACK



 -1

ORIGAMI MISHAP

Paper cut.

-1 from Physical Pain Score.



 -2

ORIGAMI MISHAP

Cardboard paper cut.

-2 from Physical Pain Score.



 -3

ORIGAMI MISHAP

Cardboard paper cut
between the webbing of
your fingers.

-3 from Physical Pain Score.



 -1

HOLD MAH BEER!

Let's sled down this
staircase into a brick wall.

-1 from Physical Pain Score.



 -2

HOLD MAH BEER!

Watch me do a backflip for
the very first time ever.

-2 from Physical Pain Score.



 -3

HOLD MAH BEER!

Imma jump my bike over
this here fire pit y'all!

-3 from Physical Pain Score.



 -1

MIDDLE OF THE NIGHT POTTY

Stub toe on bed frame.

-1 from Physical Pain Score.



 -2

MIDDLE OF THE NIGHT POTTY

Stub toe on bed frame,
pee pants.

-2 from Physical Pain Score.





 -3

MIDDLE OF THE NIGHT POTTY

Stub toe on bed frame, fall down stairs, pee pants.

-3 from Physical Pain Score.



 -1

INSTRUCTIONS UNCLEAR

Lather, rinse, repeat, never stop.

-1 from Physical Pain Score.



 -2

INSTRUCTIONS UNCLEAR

Go swimming immediately after eating.

-2 from Physical Pain Score.



 -3

INSTRUCTIONS UNCLEAR

Making toast while in the bathtub.

-3 from Physical Pain Score.



 -1

PAIN IN MY...

Assorted objects that cause general discomfort.

-1 from Physical Pain Score.



 -2

PAIN IN MY...

Assaulted by twenty miniature horses.

-2 from Physical Pain Score.



 -3

PAIN IN MY...

Assailant mugs you in a back alley.

-3 from Physical Pain Score.



 -1

LET'S GET PHYSICAL

Dislocate arm during Pilates class.

-1 from Physical Pain Score.





 -2

LET'S GET PHYSICAL

Impaled by disgruntled goat during Goat Yoga.

-2 from Physical Pain Score.



 -3

LET'S GET PHYSICAL

Break ankle in trampoline hip hop class.

-3 from Physical Pain Score.



 -1

WHAT'S COOKIN'?

Burn dinner.

-1 from Emotional Pain Score.



 -2

WHAT'S COOKIN'?

Dog won't even eat your cooking.

-2 from Emotional Pain Score.



 -3

WHAT'S COOKIN'?

Verbally attacked by Gordon Ramsay.

-3 from Emotional Pain Score.



 -1

SOCIAL ANXIETY

Zero likes on your latest social media post.

-1 from Emotional Pain Score.



 -2

SOCIAL ANXIETY

Friend's identical photo receives more likes.

-2 from Emotional Pain Score.



 -3

SOCIAL ANXIETY

Someone comments "WOOF" on your selfie.

-3 from Emotional Pain Score.





💧-1

**I'M NOT CRYING,
YOU'RE CRYING!**

Two words: Baby Yoda.

-1 from Emotional Pain Score.



💧-2

**I'M NOT CRYING,
YOU'RE CRYING!**

Celebrity superhero visits
a sick child in the hospital
in costume.

-2 from Emotional Pain Score.



💧-3

**I'M NOT CRYING,
YOU'RE CRYING!**

Watching Bing Bong
sacrifice himself for Joy.

-3 from Emotional Pain Score.



💧-1

**FIRST WORLD
PROBS**

No Wi-Fi on glamping trip.

-1 from Emotional Pain Score.



💧-2

**FIRST WORLD
PROBS**

Phone battery at 20%
and it's only 10am.

-2 from Emotional Pain Score.



💧-3

**FIRST WORLD
PROBS**

Whole Foods runs
out of avocados.

-3 from Emotional Pain Score.



💧-1

**PUPPIES
AND KITTENS**

A litter of puppies and
kittens playing in freshly
fallen snow.

-1 from Emotional Pain Score.



💧-2

**PUPPIES
AND KITTENS**

Kitten stuck in a tree,
gets saved by an
attractive fireman.

-2 from Emotional Pain Score.





 -3

PUPPIES AND KITTENS

YouTube video of a
veteran being reunited
with their dog.

-3 from Emotional Pain Score.



 -1

EMOTIONAL ROLLERCOASTER

Ross and Rachel.
Will they, wont they?

-1 from Emotional Pain Score.



 -2

EMOTIONAL ROLLERCOASTER

Ordering your favorite
take-out, getting home
and discovering it's wrong.

-2 from Emotional Pain Score.



 -3

EMOTIONAL ROLLERCOASTER

Winning the lottery,
splitting it with the
thousand other winners.

-3 from Emotional Pain Score.



 -1

SPOILER ALERT

Rosebud is a sled.

-1 from Psychological Pain Score.



 -2

SPOILER ALERT

Bruce Willis was dead
the whole time.

-2 from Psychological Pain Score.



 -3

SPOILER ALERT

Han Solo dies.

-3 from Psychological Pain Score.



 -1

HEADACHE, PARTY OF ONE

All day work
conference call.

-1 from Psychological Pain Score.





 -2

HEADACHE, PARTY OF ONE

“Well, according to my
enneagram number...”

-2 from Psychological Pain Score.



 -3

TRIGGERED!

The person in front of you is
driving slow in the fast lane.

-3 from Psychological Pain Score.



 -3

HEADACHE, PARTY OF ONE

Baby Shark stuck on repeat.

-3 from Psychological Pain Score.



 -1

PLS HALP!

Explain a meme to
your grandmother.

-1 from Psychological Pain Score.



 -1

TRIGGERED!

Arguing politics with
someone on Twitter.

-1 from Psychological Pain Score.



 -2

PLS HALP!

Helping an elderly person
save something to the cloud.

-2 from Psychological Pain Score.



 -2

TRIGGERED!

Someone comments
“OK Boomer!”

-2 from Psychological Pain Score.



 -3

PLS HALP!

Assemble IKEA furniture.

-3 from Psychological Pain Score.







-1

BAD DREAMS ARE MADE OF THESE

Falling from a great height.

-1 from Psychological Pain Score.



-2

BAD DREAMS ARE MADE OF THESE

Teeth are falling out.

-2 from Psychological Pain Score.



-3

BAD DREAMS ARE MADE OF THESE

Went to school naked.

-3 from Psychological Pain Score.



-1

MENTAL GYMNASTICS

Solar power stops working when the sun goes down.

-1 from Psychological Pain Score.



-2

MENTAL GYMNASTICS

The earth is flat but the sun and moon are round.

-2 from Psychological Pain Score.



-3

MENTAL GYMNASTICS

Vaccines cause autism.

-3 from Psychological Pain Score.



-1

POINTLESS QUESTIONS

Did Adam and Eve have a belly button?

-1 from Existential Pain Score.



-2

POINTLESS QUESTIONS

How many holes does a straw have?

-2 from Existential Pain Score.





 -3

POINTLESS QUESTION

Is Pepsi okay?

-3 from Existential Pain Score.

 -1

WHY AM I AWKWARD?

Push on a door that says pull.

-1 from Existential Pain Score.

 -2

WHY AM I AWKWARD?

Tell a service worker "You too!"

-2 from Existential Pain Score.

 -3

WHY AM I AWKWARD?

Wave at someone who is waving at someone behind you.

-3 from Existential Pain Score.



 -1

ARE WE ALONE?

Look to the stars in fear.

-1 from Existential Pain Score.

 -2

ARE WE ALONE?

Have to go into the basement but the light bulb is burnt out.

-2 from Existential Pain Score.

 -3

ARE WE ALONE?

No.

-3 from Existential Pain Score.

 -1

WHO AM I?

Question the nature of your existence.

-1 from Existential Pain Score.







WHO AM I?

Realize we're just a tiny marble hurtling through space...

-2 from Existential Pain Score.



WHO AM I?

Question the meaning of life and everything you've come to believe.

-3 from Existential Pain Score.



ANXIOUS MUCH?

Compose an email with someone looking over your shoulder.

-1 from Existential Pain Score.



ANXIOUS MUCH?

Introduce yourself to a room full of strangers.

-2 from Existential Pain Score.



ANXIOUS MUCH?

Attend a party where there is no dog to play with.

-3 from Existential Pain Score.



IS THIS REAL LIFE?

Remember something dumb you did ten years ago.

-1 from Existential Pain Score.



IS THIS REAL LIFE?

Lose an argument with yourself in your head.

-2 from Existential Pain Score.



IS THIS REAL LIFE?

Or is this just fantasy?

-3 from Existential Pain Score.







SUPERUNNATRUAL

Lights flickering in
creepy Morse code.

-1 from Supernatural Pain Score.



SUPERUNNATRUAL

Hearing something whisper
“get out” into your ear.

-2 from Supernatural Pain Score.



SUPERUNNATRUAL

Did that doll just move?

-3 from Supernatural Pain Score.



WE ARE NOT ALONE

Memory wiper
flashy thingy.

-1 from Supernatural Pain Score.



WE ARE NOT ALONE

Alien laser ray to the face.

-2 from Supernatural Pain Score.



WE ARE NOT ALONE

Abducted, probed.

-3 from Supernatural Pain Score.



GHOSTED

Cold prick on the
back of your neck.

-1 from Supernatural Pain Score.



GHOSTED

A white sheet with two
holes cut out for eyes
attacks you.

-2 from Supernatural Pain Score.





 -3

GHOSTED

Possessed by eighteenth century Victorian woman.

-3 from Supernatural Pain Score.



 -1

NO YOU IDIOT!

I'm going to run into the forest in the middle of the night.

-1 from Supernatural Pain Score.



 -1

SCOOBY SNACKS

The feeling someone is watching you through the eye holes of an old painting.

-1 from Supernatural Pain Score.



 -2

NO YOU IDIOT!

Hey guys! Let's go into that abandoned cabin in the woods

-2 from Supernatural Pain Score.



 -2

SCOOBY SNACKS

Fall into a trap door hidden in the floor.

-2 from Supernatural Pain Score.



 -3

NO YOU IDIOT!

Surely this pitch black cave is safe to camp in for the night.

-3 from Supernatural Pain Score.



 -3

SCOOBY SNACKS

Disappear behind a bookshelf, never to be seen again.

-3 from Supernatural Pain Score.



 -1

UNEXPLAINED

TV clicks on to static.

-1 from Supernatural Pain Score.







UNEXPLAINED

Closet door creaks open in the middle of the night.

-2 from Supernatural Pain Score.



UNEXPLAINED

Loud banging sounds from the attic.

-3 from Supernatural Pain Score.



DECREASE TOLERANCE

Decrease the Pain Tolerance of any Test Subject by 1.

Place this card with the Test Subject you wish to affect.



DECREASE TOLERANCE

Decrease the Pain Tolerance of any Test Subject by 1.

Place this card with the Test Subject you wish to affect.



INCREASE TOLERANCE

Increase the Pain Tolerance of any Test Subject by 1.

Place this card with the Test Subject you wish to affect.



INCREASE TOLERANCE

Increase the Pain Tolerance of any Test Subject by 1.

Place this card with the Test Subject you wish to affect.

DECREASE TOLERANCE -1



HEALING TOUCH

Remove one Pain card from any Test Subject owned by a Classmate.

Place in the Discard Pile after use.

DECREASE TOLERANCE -1



HEALING TOUCH

Remove one Pain card from any Test Subject owned by a Classmate.

Place in the Discard Pile after use.

INCREASE TOLERANCE +1

INCREASE TOLERANCE +1





DETENTION

Use this card on any
Classmate to make them
skip their next turn.

Place in the Discard Pile after use.



DETENTION

Use this card on any
Classmate to make them
skip their next turn.

Place in the Discard Pile after use.



TEACHER'S PET

Draw an extra Test Subject
card and add it to your
Death List.

You **MUST** play this card now.

Remove card from game after use.



EXTRA CREDIT

Draw an extra Test Subject
card and add it to a
Classmate's Death List.

Remove card from game after use.



SWAP IT LIKE IT'S HOT

Swap any living Test Subject
from your Death List for
any living Test Subject on a
Classmate's Death List.

Any Pain cards played on each
Test Subject move with them.

Place in the Discard Pile after use.



SWAP IT LIKE IT'S HOT

Swap any living Test Subject
from your Death List for
any living Test Subject on a
Classmate's Death List.

Any Pain cards played on each
Test Subject move with them.

Place in the Discard Pile after use.



GROUP PROJECT

Your Classmates decide as a
group what card(s) you play
on your next turn.

You **MUST** play this card now.

Hand your cards over to your
Classmates on your next turn.

Place in the Discard Pile after use.



GROUP PROJECT

Your Classmates decide as a
group what card(s) you play
on your next turn.

You **MUST** play this card now.

Hand your cards over to your
Classmates on your next turn.

Place in the Discard Pile after use.





I WILL REVIVE!

Use this card on a Classmate to bring any dead Test Subject back to life.

Classmate must take any Test Subject out of their Cemetery and place back in their Death List.

Remove card from game after use.



ZOMBIE UPRISING

One Test Subject from every Classmate's Cemetery, including your own, must return to their Death List.

You MUST play this card now.

Remove card from game after use.



INSTANT KILL

Use this card to instantly kill any Test Subject of your choice.

Place in the Discard Pile after use.

